

NEW



BOLT BINS

INNOVATION IN ORGANIZATION

**Maintainer's Strong & Lightweight Bolt Bins
Set the Standard for All of Your Component Storage**



STANDARD SIZES AVAILABLE OR CONFIGURE YOUR OWN!

Sides & shelves constructed of .090 thick aluminum with composite bins & aluminum dividers

Maintainer

800-831-8588 | www.maintainer.com

FEATURES

8 STANDARD CONFIGURATIONS AVAILABLE:

#026067
9 BINS



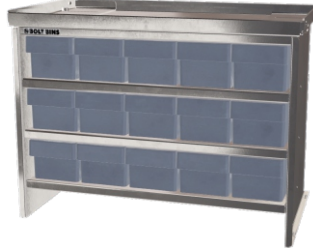
3 wide x 3 tall
Bottom space - 4.5"
18.5"w x 23.5"h x 18.5"d
weight = 50 lbs.

#026062
12 BINS



4 wide x 3 tall
Bottom space - 4.5"
24.2"w x 23.5"h x 18.5"d
weight = 62 lbs.

#026064
15 BINS



5 wide x 3 tall
Bottom space - 3.5"
29.8"w x 22.5"h x 18.5"d
weight = 73 lbs.

#025928
18 BINS



6 wide x 3 tall
Bottom space - 3.5"
35.5"w x 22.5"h x 18.5"d
weight = 85 lbs.

#026068
18 BINS



3 wide x 6 tall
Bottom space - 4.5"
18.5"w x 40.8"h x 18.5"d
weight = 85 lbs.

#026063
20 BINS



4 wide x 5 tall
Bottom space - 4.5"
24.2"w x 35"h x 18.5"d
weight = 92 lbs.

#026065
21 BINS



7 wide x 3 tall
Bottom space - 3.5"
41.2"w x 22.5"h x 18.5"d
weight = 97 lbs.

#026066
24 BINS

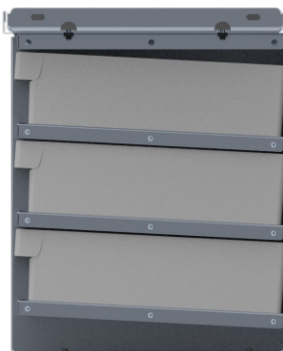


8 wide x 3 tall
Bottom space - 3.5"
46.8"w x 22.5"h x 18.5"d
weight = 108 lbs.

Bottom space is measured from the floor to the bottom of the lowest row of bins.



Standard telescoping aluminum top shelf can expand your work space up to 6" on each side



Each shelf is angled back so bins stay put



Aluminum removable dividers included in each bin:
18.5" deep - 3 dividers per bin
12.5" deep - 2 dividers per bin

STANDARD DEPTH
18.5"
Rated For
25 lbs. Per Bin

OPTIONAL DEPTH
12.5"
Rated For
20 lbs. Per Bin

Custom Sizes Available!

