

# H7024 CRANE

AVAILABLE IN SHORT AND TALL TOWER CONFIGURATIONS



MODEL	TYPE	Crane Rating (ft*lb)	REACH	Max Lift (lbs)	BOOM ELEVATION
H7024	Hydraulic	45,100	24'	7,000	-13° +78°

# Maintainer

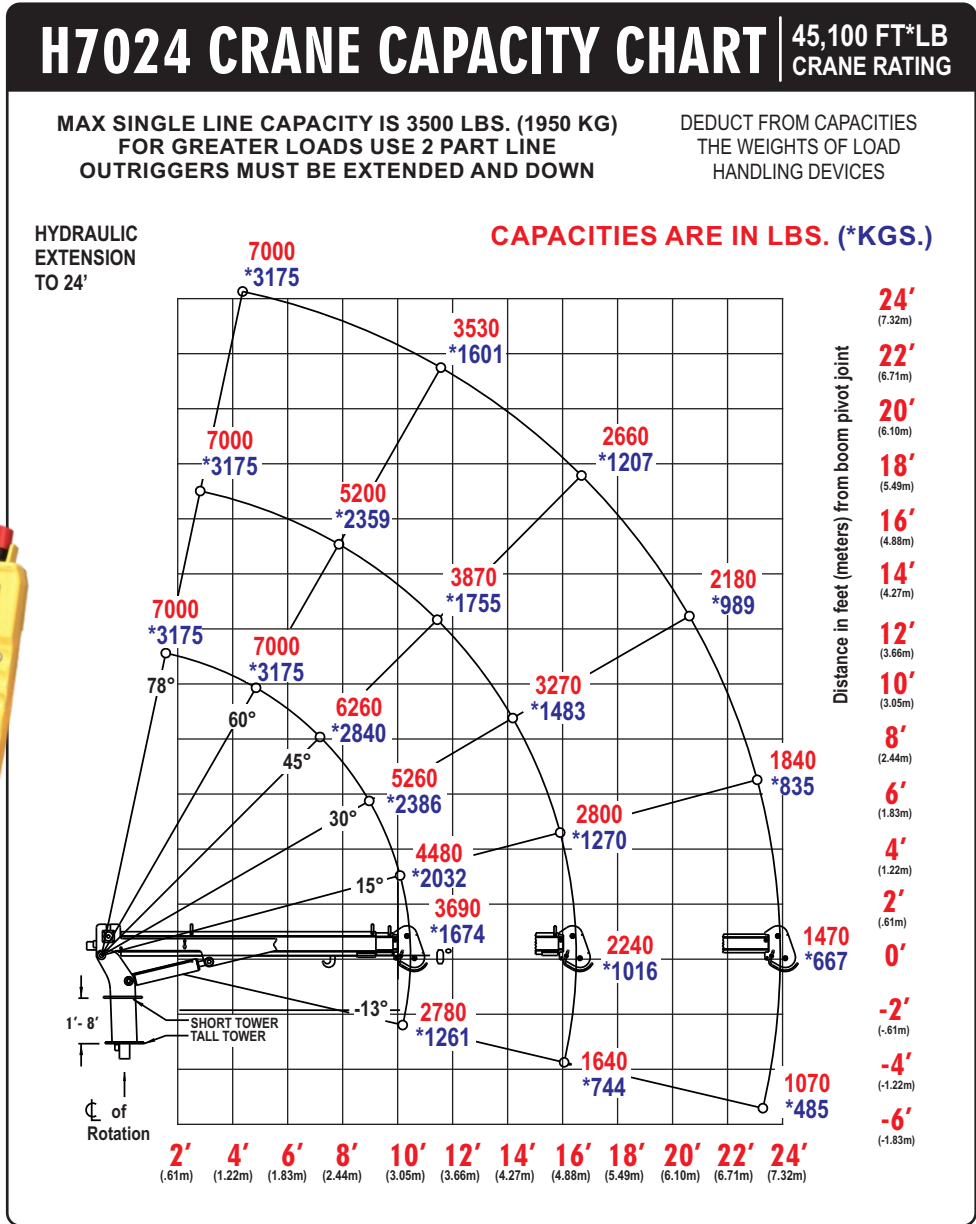
800-831-8588 | [www.maintainer.com](http://www.maintainer.com)



# specifications



- 24 ft. Hydraulic Reach
- 615° Rotation
- Weight—1,700 lb
- Total Operational Range 91° (-13 to +78)
- 110 ft. of 8 mm dia. Steel Cable



## options

- Boom tip LED flood lights
- Boom tip Umbrella Mounts
- Open-center hydraulic system
- Advanced Crane Control 2.2

## features

- Advanced Crane Control 2.1 - standard
- Tall and Short Tower Configurations
- Wireless Remote Control - standard
- Hexagonal Boom
- Dual Part Line (Single Part Capable)
- User-friendly Load Block storage
- Live weight display on remote
- Boom-mounted planetary winch
- Double Sheave Design
- Closed-center/Load-sensing Hydraulic System
- OSHA 1910.180 / ANSI B30.5 Compliant

