

H10034 CRANE

AVAILABLE IN SHORT AND TALL TOWER CONFIGURATIONS



MODEL	TYPE	Crane Rating (ft*lb)	REACH	Max Lift (lbs)	BOOM ELEVATION
H10034	Hydraulic	75,000	34'	10,000	-13° +78°

Maintainer

800-831-8588 | www.maintainer.com

specifications



- 10,000 lb. max. capacity
- 75,000 ft-lb capacity
- 34' hydraulic reach
- 2486 lbs. (998 KGS)
- Total operational range 91° (-13 to +78)
- 140' of 3/8" diameter wire rope
- 615° of rotation
- 22" x 22" Mounting Space Required
- Mounting requires (8) 7/8-9 (GRD-8) bolts
- Hydraulic Requirements: 10-12 GPM@3000 PSI



options

- Boom tip LED flood lights
- Boom tip Umbrella Mounts
- Open-center hydraulic system
- Advanced Crane Control 2.2

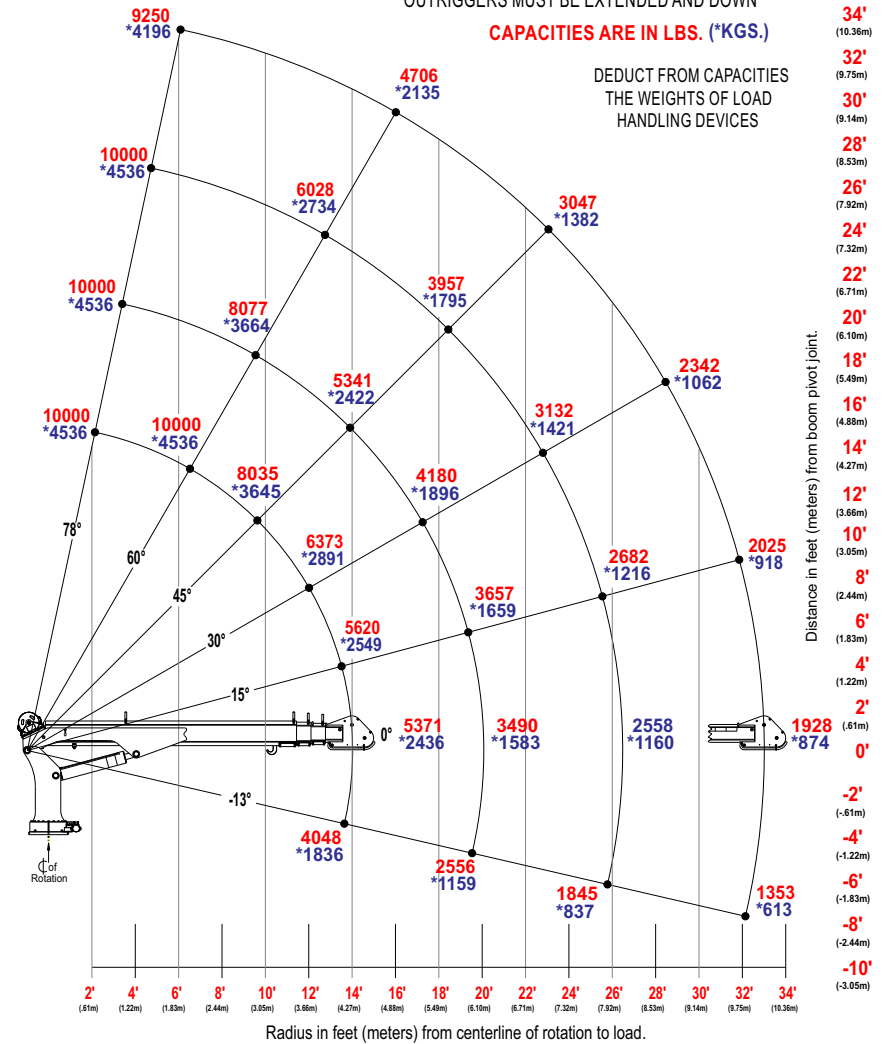
H10034 CRANE CAPACITY CHART 75,000 FT*LB CRANE RATING

HYDRAULIC EXTENSION TO 34'

MAX SINGLE LINE CAPACITY IS 5000 LBS (2268 KG)
FOR GREATER LOADS USE 2 PART LINE
OUTRIGGERS MUST BE EXTENDED AND DOWN

CAPACITIES ARE IN LBS. (*KGS.)

DEDUCT FROM CAPACITIES
THE WEIGHTS OF LOAD
HANDLING DEVICES



features

- Advanced Crane Control 2.1 - standard
- Tall and Short Tower Configurations
- Wireless Remote Control - standard
- Hexagonal Boom
- Dual Part Line (Single Part Capable)
- User-friendly Load Block storage
- Live weight display on remote
- Boom-mounted planetary winch
- Double Sheave Design
- Closed-center/Load-sensing Hydraulic System
- OSHA 1910.180 / ANSI B30.5 Compliant

