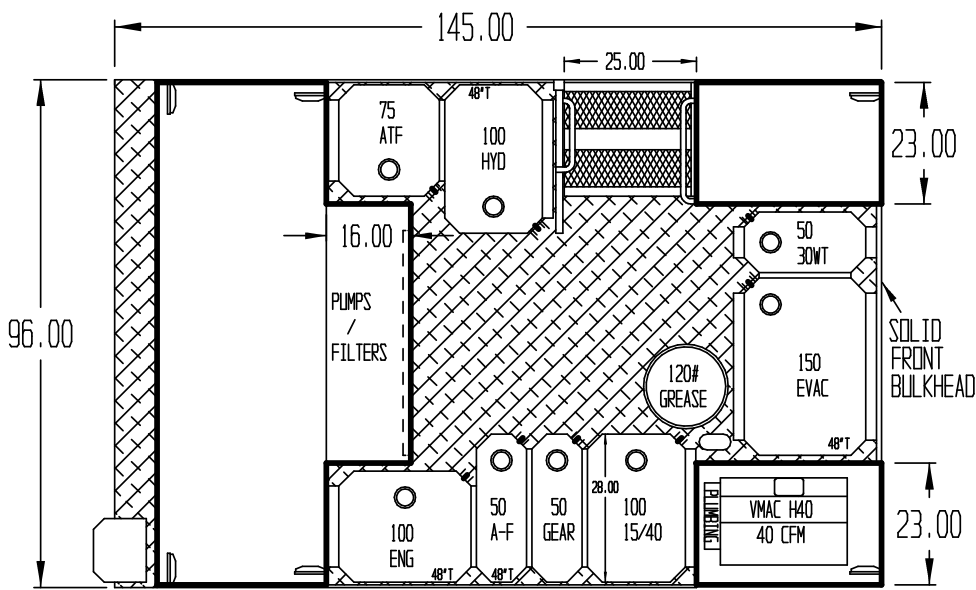


SIGNATURE SERIES LUBE

PM11 Aluminum Body





FEATURING

- ✓ 525 live gallons + evac + grease
- ✓ 7 new products max
- ✓ Left over payload capacity
 - 1,550 lbs. available payload with 19,500 lb. GVW chassis.
 - 4,050 lbs. available payload with 22,000 lbs. GVW chassis

NOTE: Final available payload amount will vary depending on chassis options.

STANDARD FEATURES

- Requires a minimum of 19,500 lbs. GVWR rated chassis
- Requires an 84" CA chassis w/clean outside of frame
- 11.5" all-aluminum body construction
- Recessed side access steps with (2) large grab handles & a full height door
- 12V LED strip lights in recessed step area for bed access
- (3) under-body storage compartments
- Driver side large above deck storage compartment with adjustable shelves
- Passenger front larger vertical storage compartment
- Dedicated pump, filter, and hydraulic control compartment
- Rear reel compartment with roll up door
- Closed center & open center hydraulic power package with in-line cooler
- 50 gallon antifreeze tank
- (2) 50 gallon oil tank
- 75 gallon oil tank
- (3) 100 gallon oil tanks
- 150 gallon used oil tank
- 120 lb. grease drum
- Aluminum tanks, rubber isolated mounted, sight gauge, vented fill cap
- (6) hydraulic driven oil pumps
- (1) hydraulic driven used oil pump
- (1) air operated antifreeze pump
- (1) air operated 50:1 grease pump system
- Recessed aluminum used filter bin, plumbed to used oil
- Hannay 1/2" x 50' reels for oils, antifreeze
- Hannay 3/8" x 50' reel for grease
- Hannay 1" x 30' waste oil reel with ball valve & suction screen
- 12V diesel fuel filter fill station
- Metered nozzles on all oils and antifreeze products
- Metered nozzle storage tubes built into used filter bin
- 40 cfm rotary screw hydraulic driven air compressor with 1/2" x 50' air reel
- (6) LED exterior flood lights on body
- 12V LED interior strip lights in all compartments including pump compartment
- 8" bumper with removable vise mounting plate
- ICC lighting package
- Back up alarm
- Rear recessed strobe lights

OPTIONS

- Tank quick fill
- Additional dispenser options
- Hinge up rear reel compartment door
- DualLock drawers
- Product dispensing filter options
- Tank full indicator lights and gauges
- Strobe lights
- Tank heater system
- Hydraulic pressure washer
- Hydraulic used oil pump



Maintainer

1701 2nd Ave | Sheldon, IA 51201 | 800-831-8588 | maintainer.com

