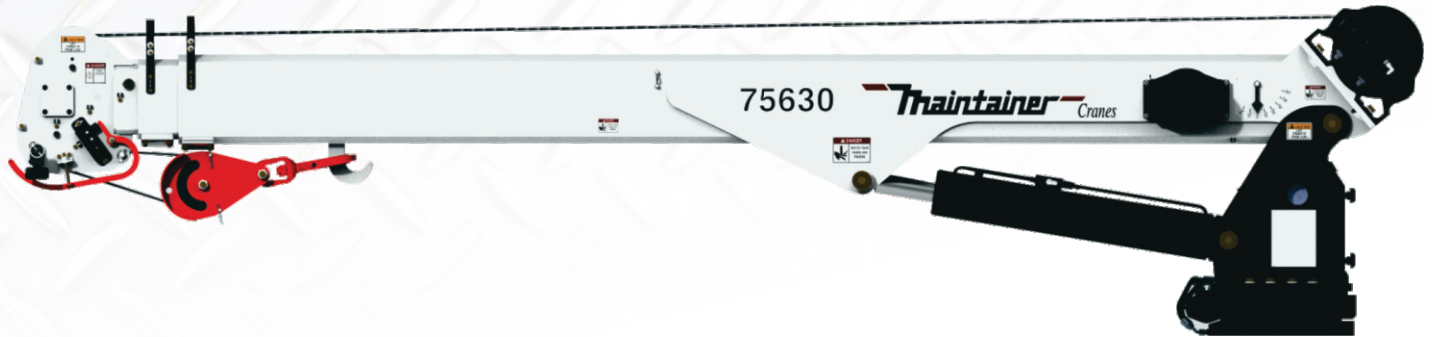




HYDRAULIC CRANES

Models 75624 & 75630



Maintainer cranes are designed to perform reliably even in the harshest conditions

Featuring: LED boom-tip floodlights, an enclosed sealed rotation bearing, a low-profile boom tip sheave head, boom tip accessory mounting plates, a hinged protective valve cover, enhanced protective valve coatings for corrosion resistance, sealed rubber-booted solenoid push buttons, a sealed crane turret, and more. These advanced features ensure durability and smooth operation for your toughest jobs.



Advanced Crane Control 2.1

STANDARD on all hydraulic cranes 65620 and larger

- Live weight display is on remote control and on the display screens in compartment
- Automatic capacity & speed limiting in low stability lifting areas by sensing truck level and boom angle
- Automatic stability monitoring reduces operator error
- Reduces rotation speed under heavy load or long extensions for improved operational control
- Will warn the operator and stop crane rotation if necessary

Pistol Grip Wireless Remote

STANDARD on all hydraulic cranes

- 35' Backup cable
- Toggle switch controls
- Large LED display screen
- Vibration alerts
- Charging docking station with spare battery
- Engine start/stop, speed control, and a/c controls



STANDARD FEATURES

7,500 Lb. Lift Capacity

(75624) Max. Reach 24' - (75630) Max. Reach 30'

Hexagonal Boom

Boom Mounted Planetary Winch

Counterbalance Valves On Extend & Lift Cylinders

(2) LED Boom Tip Lights

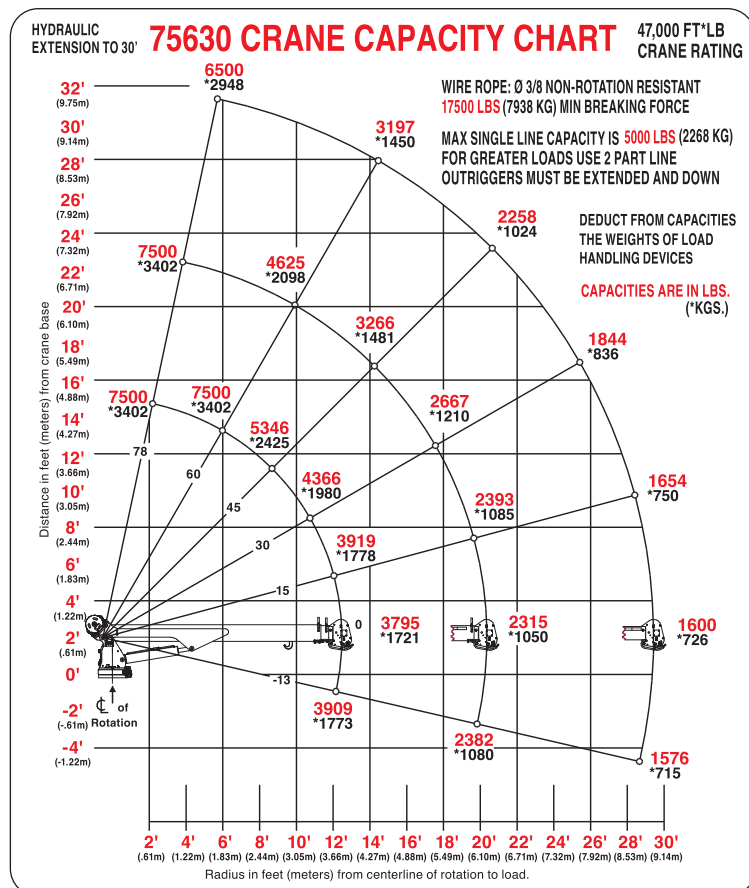
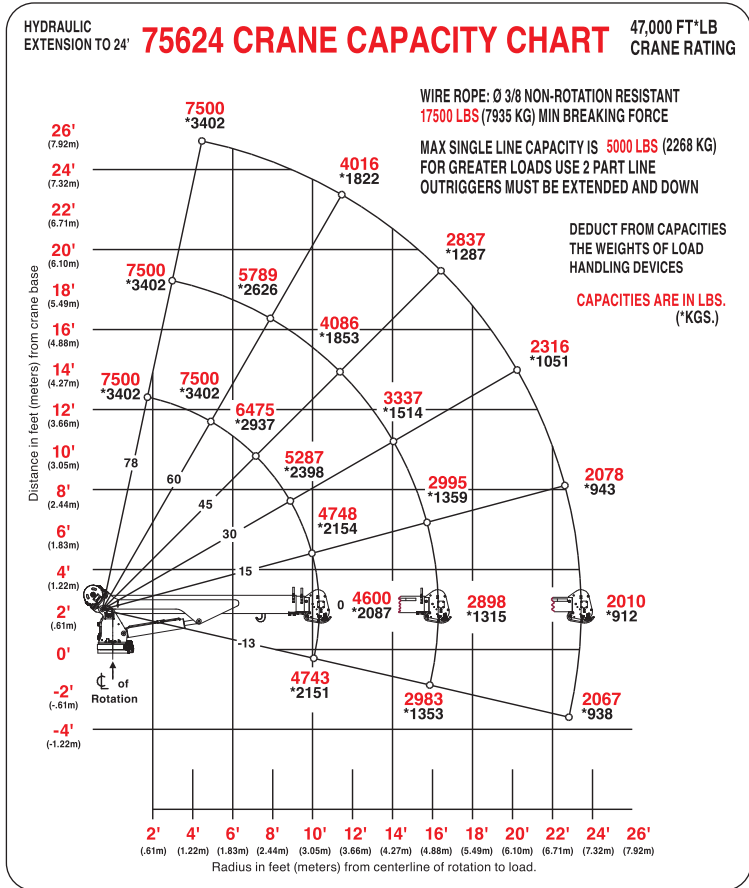


Advanced Crane Control 2.2

OPTIONAL on all hydraulic cranes 65620 and larger

- Automatic Stability Zone Charts - The system knows the position of the crane and will automatically reduce the maximum capacity of the crane.
- Rotate Stow Assist - As you stow the crane, you can hold the rotate button full speed, but the crane will stop and center itself over the boom saddle. As you then boom down, the crane will slow itself as it nears the saddle.
- Body Collision Prevention - You won't accidentally run your crane into your own truck body or chassis exhaust stack. The system will stop crane from rotating or booming down through these areas!

SPECIFICATIONS - 75624 & 75630



Crane Rating

47,000 ft-lb

Retracted Boom Length

75624: 10'10" from center line of crane
75630: 13' from center line of crane

Boom Extension

Two stage 100% Hydraulic

Maximum Horizontal Reach

75624: 24'
75630: 30'

Maximum Vertical Lift

75624: 26' 2"
75630: 32'

Lifting Capacity

7,500 lbs @ 6'
75624: 2,010 lbs @ 24'
75630: 1,600 lbs @ 30'

Boom Elevation

-13° to 78°

Stowed Height

3' 5"

Mounting Space Required

22.5" x 23"

Bolt Hole Pattern

14.75" x 14.75"

Approximate Crane Weight

75624: 1,950 lbs
75630: 2,150 lbs

Winch: Rope Diameter

Ø 3/8" x 140'

Winch: Line Pull Speed

55' ft/min

Winch: Maximum Single Part Line

5,000 lbs

Winch: Maximum Double Part Line

7,500 lbs

Rotation

400°

Power Supply Req. PTO & Pump

11 GPM @ 3,000 psi

Min Chassis GVWR

19,500#



Maintainer
1701 2nd Ave - Sheldon, IA 51201
maintainer.com
800-831-8588