



**Maintainer**

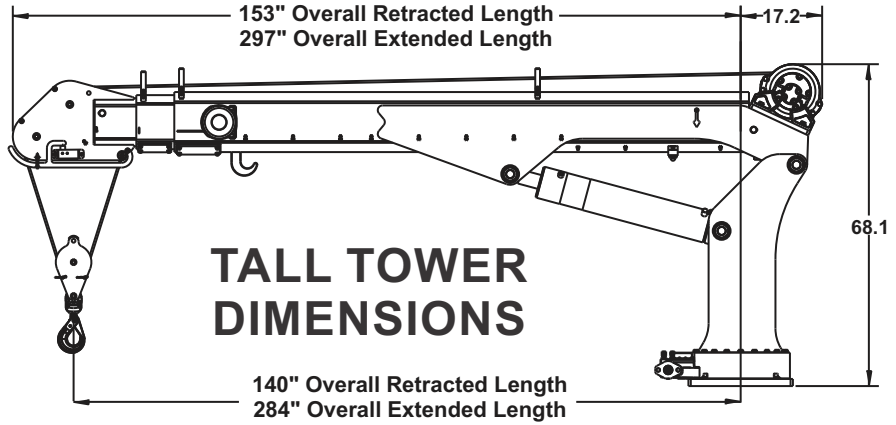
**H12025 CRANE**



# specifications



- 2466 lbs. (998 KGS)
- 22" x 24" Mounting Space Required
- Mounting requires (8) 7/8-9 (GRD-8) bolts
- Hydraulic Requirements: 10-12 GPM@3000 PSI



## ratings

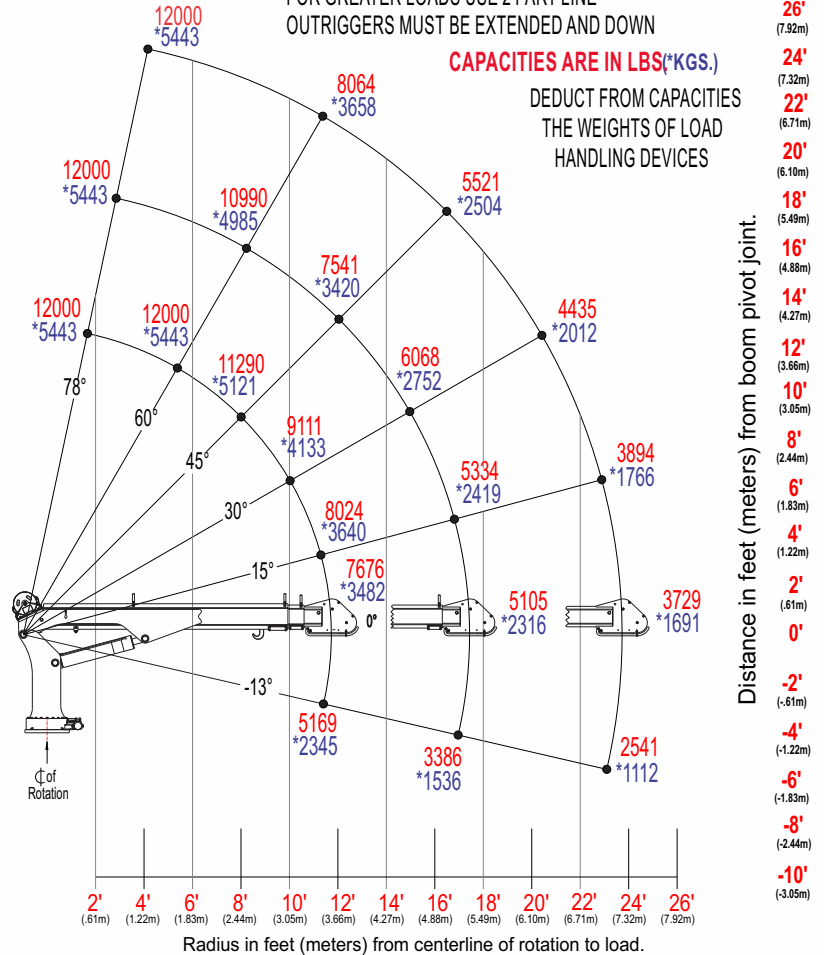
### H12025 CRANE CAPACITY CHART 90,000 FT\*LB CRANE RATING

HYDRAULIC EXTENSION TO 24' 9"

MAX SINGLE LINE CAPACITY IS 6000 LBS (2722 KG)  
FOR GREATER LOADS USE 2 PART LINE  
OUTRIGGERS MUST BE EXTENDED AND DOWN

CAPACITIES ARE IN LBS(\*KGS.)

DEDUCT FROM CAPACITIES THE WEIGHTS OF LOAD HANDLING DEVICES



## features

- 12,000 lb. max. capacity
- 90,000 ft\*lb capacity
- 25' hydraulic reach
- Advanced Crane Control - standard
- Boom-Mounted planetary winch
- Dual part line standard - single part capable
- Total operational range 91° (-13 to +78)
- Low profile double sheave design
- Anti-Two block relocation (left side)
- User-Friendly load block storage
- 120' of 7/16" diameter wire rope
- 615° of rotation
- Hexagonal boom
- Tall tower configurations
- Wireless remote - standard
- Closed-center/load sensing hydraulic system (open center optional)
- OSHA 1910.180/ANSI B30.5 compliant

