

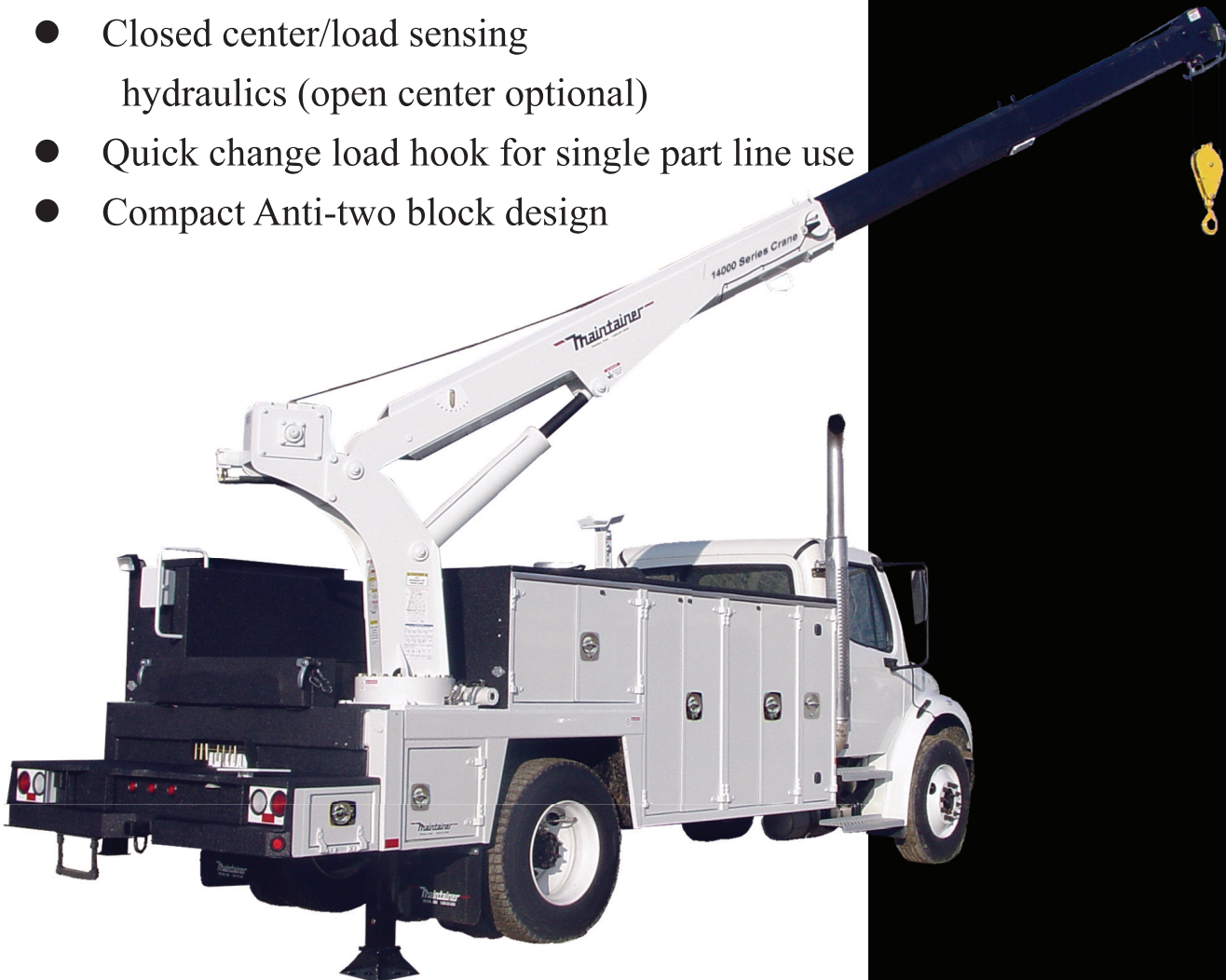
Maintainer

14000 Series Crane

Features

- 14,000 lb. maximum lift capacity
- 12,333 lb. lift capacity @ 6' from center line of rotation
- 24 feet hydraulic reach
- 615 degrees of rotation
- Hexagonal boom design
- Tall tower crane pedestal design
- Closed center/load sensing hydraulics (open center optional)
- Quick change load hook for single part line use
- Compact Anti-two block design

Meets OSHA
1910.180
requirements and
ANSI B30.5 safety
standards

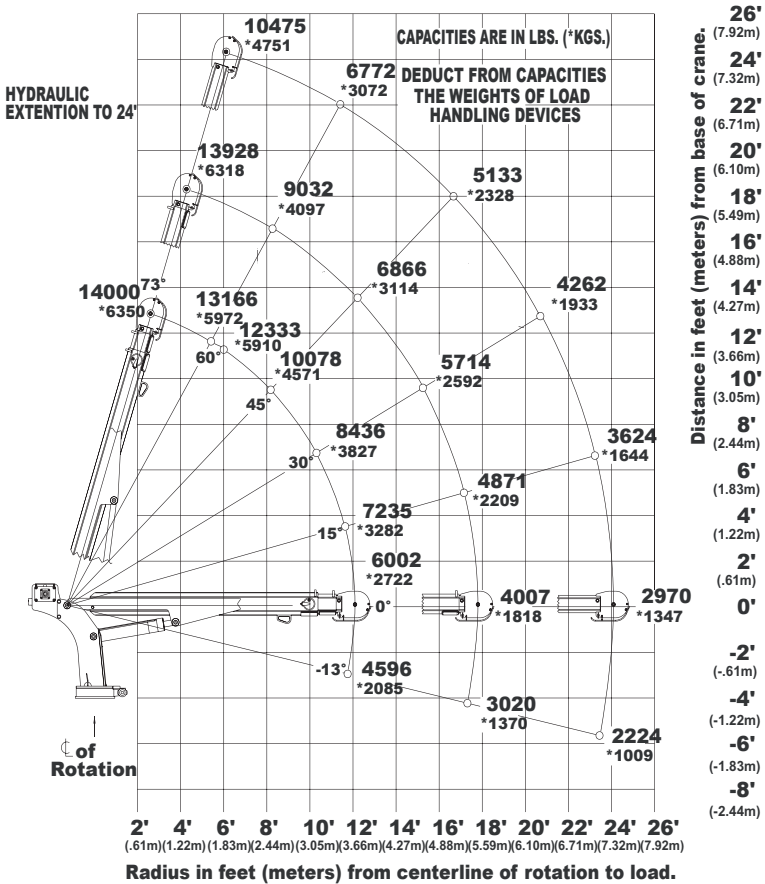


1
4
0
0
0
C
R
A
N
E



14000 SERIES CRANE CAPACITY CHART 87900 FT*LB CRANE RATING

MAX SINGLE LINE CAPACITY IS 7600 LBS (3447 KG)
FOR GREATER LOADS USE 2 PART LINE



1701 S 2ND AVE SHELDON, IA 51201
800-831-8588
WWW.MAINTAINER.COM

Winch:

- 42:1 Ratio worm gear winch with brake (standard), 30 feet/min line speed, single
- Planetary winch with brake (optional) 60 feet/min line speed, single
- Equipped with 120' of 1/2" cable
- ANSI winch drum
- Hydraulic high torque winch motor

Rotation:

- Turntable slewing ring bearing
- Self-locking modular worm drive with spur gear output, 190.4:1 ratio
- Hydraulic rotation powered by a high torque motor
- 615 Degrees of hydraulic rotation

Crane Physical Specifications

- 60.5" Overall crane height
- Wt. 2230 lbs. (1012 KGS.)
- 22" x 22" Mounting space required
- Mounting requires eight (8) 7/8-9 (GRD -8) bolts
- Hydraulic requirements 10-12 GPM@3000 PSI

Optional Equipment:

- Wireless remote control, (plug & play)
- Planetary winch, (bolt on change out)



Call for the dealer nearest you at 800.831.8588
or on the web at www.maintainer.com